

# 2026 Catalogue



# COMMITMENT TO CONSISTENT **QUALITY.**

Rocky Mountain Concrete is a Canadian manufacturer of high-quality architectural and landscape precast products.

We supply builders, masonry contractors, landscape suppliers, and building materials centers with reliable, long-lasting concrete solutions designed for our climate.

Our focus is simple: precision manufacturing, consistent quality, and dependable service.

Every product we ship is poured, finished, and inspected by a team that takes pride in the details, because our customers notice the difference.

With decades of experience, a purpose-built production facility, and a growing catalogue of products, we're committed to being the most trusted precast partner for distributors across Western Canada.

## What our clients say

---

*“Rocky Mountain Concrete is the best company to work with. I have never had any problems with the products, the quotes, or the design. All of my customers in Calgary, Alberta, are extremely satisfied with the quality of the RMC product. “*

\_\_\_\_\_ **Minh To**

White Cap Building Supply – Account Manager

---

*“Attila and Connor are an absolute pleasure to deal with. I’ve been dealing with Rocky Mountain Concrete for 7 years and they are always quick, courteous and super helpful!”*

\_\_\_\_\_ **Ashley Zimmaro-Thompson**

White Cap Building Supply – Inside Sales

---

*“RTM Masonry has worked successfully with RMC for close to 10 years on many projects across Vancouver Island. They produce an excellent product in a timely manner. We would definitely recommend them for any size project from small residential to large commercial.”*

\_\_\_\_\_ **James Sorenson**

RTM Masonry – Owner

---





## Why Distributors Work With Us

Your business relies on products that sell fast, install clean, and don't come back with issues. We build for that.

### Consistent Quality

Tight QC, durable mixes, reliable mould systems.



### Competitive Pricing

With no compromise on quality.



### Built for Canadian Conditions

Freeze-thaw durability and proven aggregates.



### Custom Manufacturing Capability

Fast turnaround on made-to-spec pieces.



### Our Customers Come First

Rapid quotes, clear communication, flexible shipping.



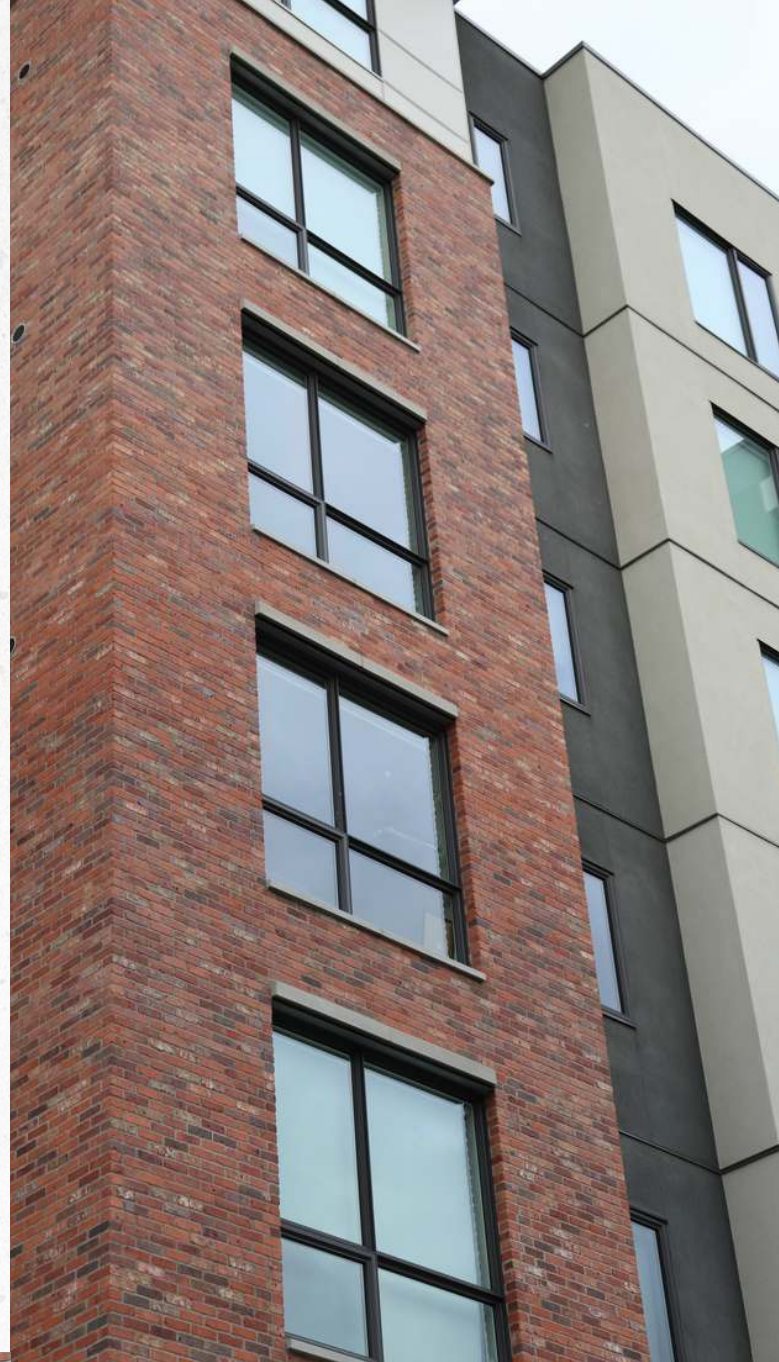
# WHY CHOOSE PRECAST?

## **Enhance the visual quality of masonry construction**

Smooth, precision-cast concrete elements introduce clean lines and refined finishes that elevate both modern and traditional masonry designs.

## **Ensure dimensional accuracy and consistent quality**

Factory-controlled production delivers uniform profiles and dependable results across every project.



## **Protect masonry walls from moisture penetration and staining**

Precast caps, sills, and architectural components are designed to shed water effectively, reducing efflorescence, staining, and long-term water damage.

# Architectural Series

**The complete range for builders who notice the difference.**

Our architectural precast brings clean lines, smooth finishes, and dependable strength to any project. From wall caps and sills to customformed components, each piece is made with exacting detail and consistent quality. The Architectural Series offers a range of finishes and colours to complement both modern and traditional designs.



# Finishes



## **Smooth**

A clean architectural finish available in a wide range of colours, with every piece sanded and patched to eliminate bug holes and deliver a flawless surface.



## **Sandblasted**

A textured finish that reveals the aggregate beneath, available in light, medium, or heavy blasting for the exact look you want.



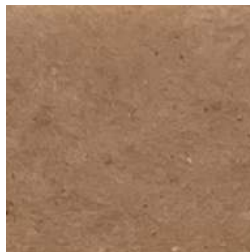
## **Exposed Aggregate**

A durable, weather-resistant finish that fully showcases the stone and stands up to the harshest outdoor conditions.

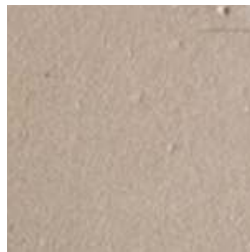
# Colours



Adobe



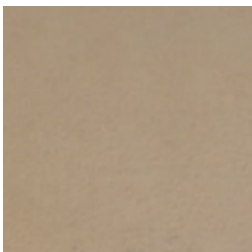
Bayou



Caramel



Charcoal



Cliffside



Cobblestone



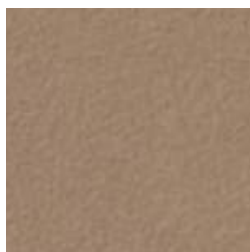
Cocoa



Dark Grey



Dune



Eastern Tan



Flagstone



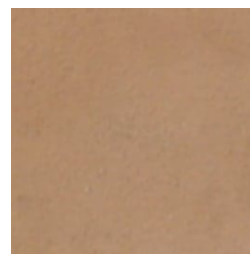
Graphite



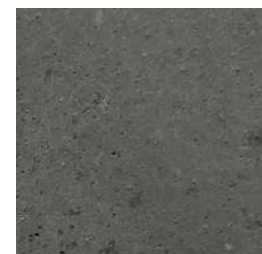
Harvest Gold



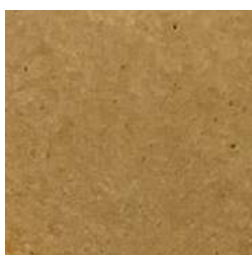
Kailua



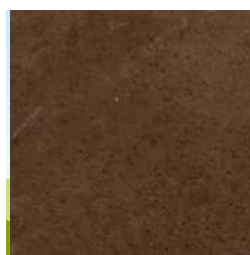
Lakeside



Light Grey



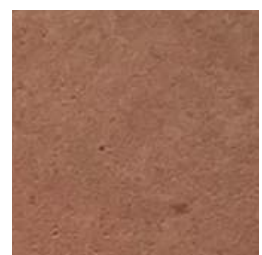
Mesa Buff



Mesquite



Miami Buff



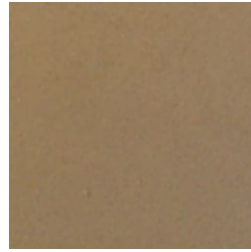
Mocha



Omaha Tan



Outback



Padre Brown



Palomino



Pebble



Pewter



Pueblo



Roadside



Rustic



San Diego Buff



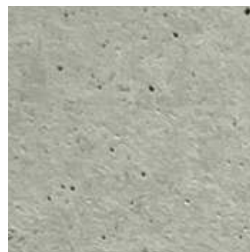
Sandstone



Sequoia Sand



Sierra



Silver Diamond



Silversmoke



Spanish Gold



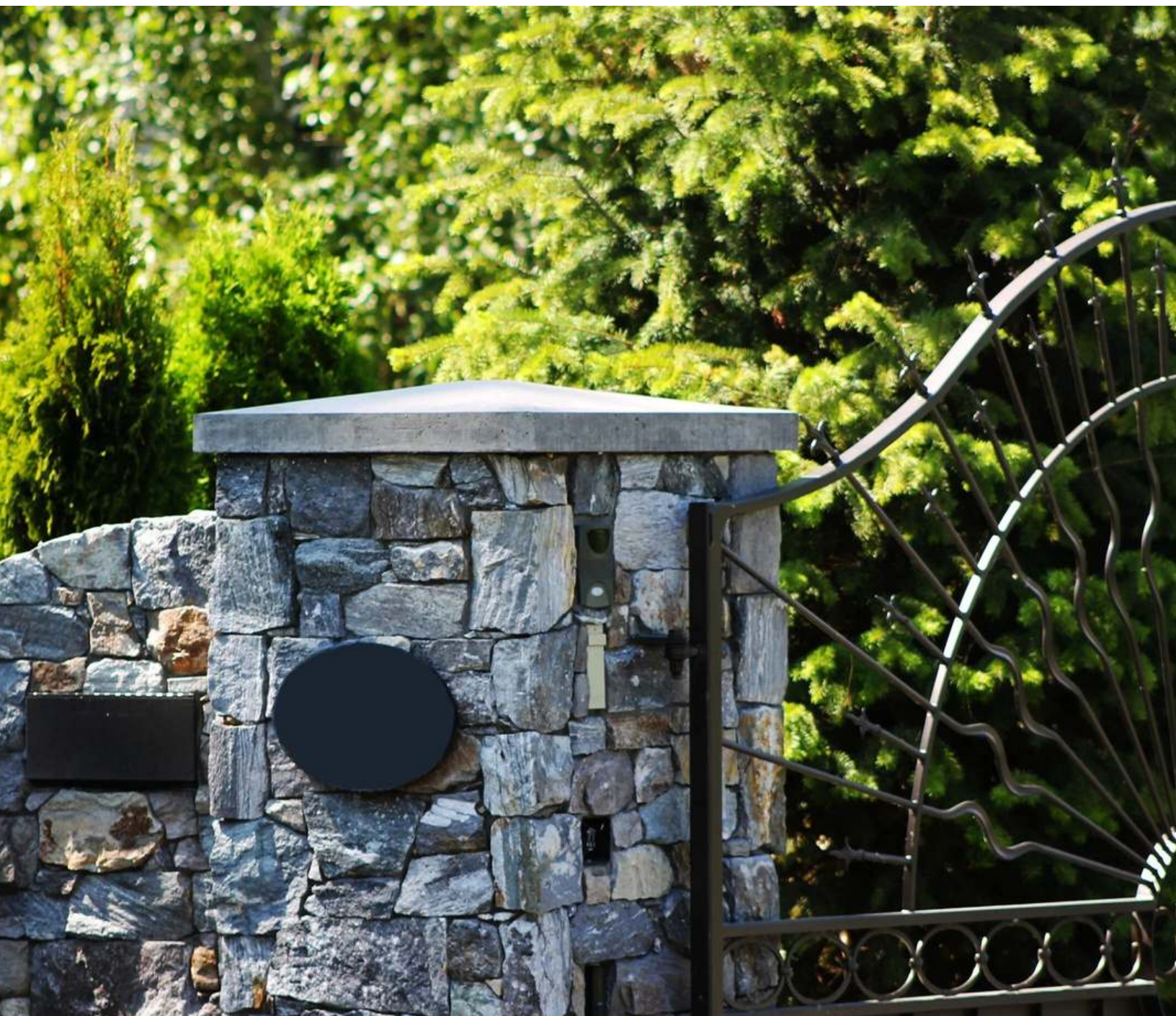
Taupe



Yosemite Brown



8084 Graphite



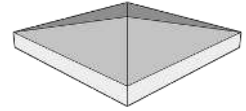
# Post Caps

Scan for more info



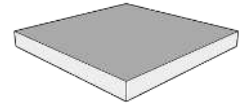
Designed for durability and clean lines, our post caps add both protection and detail to any structure.

## Peaked



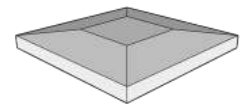
Width	Length	Edge	Peak
18"	18"	2"	4"
20"	20"	2"	4"
24"	24"	2"	3"
32"	32"	3"	5"

## Flat



Width	Length	Edge
20 <sup>1/2</sup> "	20 <sup>1/2</sup> "	3"
24"	24"	4"
28"	28"	3 <sup>1/2</sup> "
33"	33"	4"

## Peaked Flat Top



Width	Length	Edge	Peak	Flat Top
24"	24"	2"	2 <sup>1/2</sup> "	10"x10"
26"	26"	2"	2 <sup>1/2</sup> "	10"x10"
28"	28"	2"	2 <sup>1/2</sup> "	10"x10"
37"	37"	2 <sup>1/2</sup> "	4"	20 <sup>1/2</sup> " x 20 <sup>1/2</sup> "

For unique sizes or profiles, we offer full custom manufacturing; visit our website or get in touch for a custom quote.



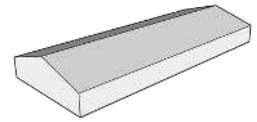
# Wall Caps

Scan for more info



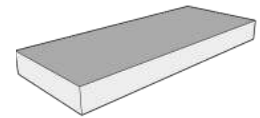
Designed to protect and define masonry walls, our wall caps deliver clean lines and long-term durability.

## Peaked



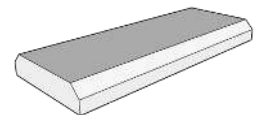
Width	Length	Edge	Peak
10"	24"	1 <sup>3/4</sup> "	2 <sup>1/4</sup> "
12"	24"	2"	2 <sup>1/2</sup> "
12"	24"	2"	3 <sup>1/2</sup> "

## Flat



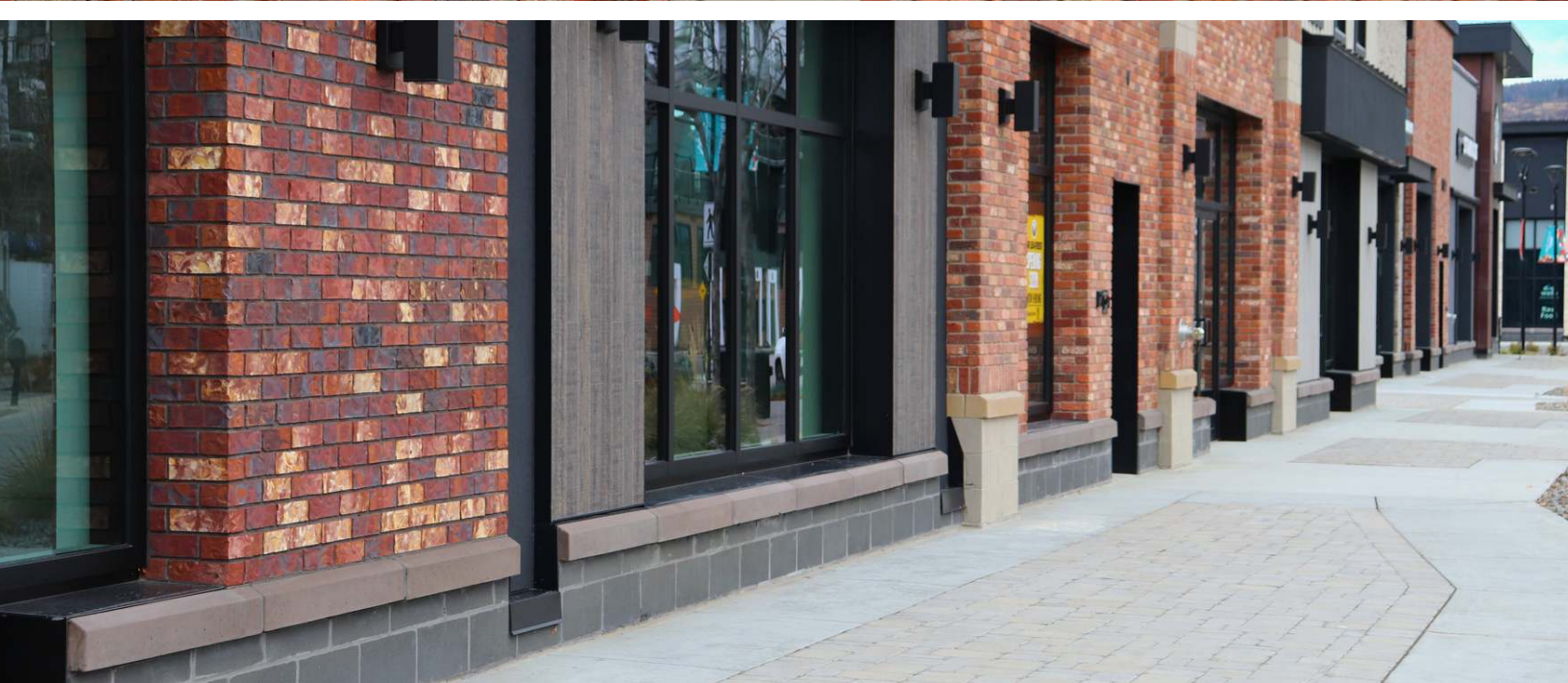
Width	Length	Edge
10"	24"	2 <sup>1/4</sup> "
12"	24"	2 <sup>1/4</sup> "
14"	24"	2 <sup>1/4</sup> "

## Chamfered



Width	Length	Edge	Chamfer
10"	24"	2 <sup>1/4</sup> "	1"
12"	24"	2 <sup>1/4</sup> "	1"
14"	24"	2 <sup>1/4</sup> "	1"

For unique sizes or profiles, we offer full custom manufacturing; visit our website or get in touch for a custom quote.



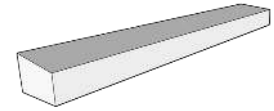
# Sills

Scan for more info



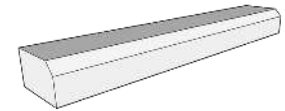
Our precast sills provide effective water runoff while enhancing the finished look of windows and openings.

## Sloped



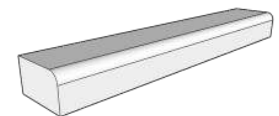
Width	Length	Back	Face
3"	24"	2"	1 1/2"
5"	36"	3"	2 1/4"
6"	36"	3 1/2"	2 1/2"

## Chamfered



Width	Length	Edge	Chamfer
2"	24"	2"	1/4"
4"	36"	4"	1"
6"	36"	3 1/2"	1"

## Bullnosed



Width	Length	Edge	Bullnose
4 1/2"	36"	3 1/2"	1/2"
6"	36"	3 1/2"	1"
6"	36"	7 3/4"	1 1/2"

For unique sizes or profiles, we offer full custom manufacturing; visit our website or get in touch for a custom quote.



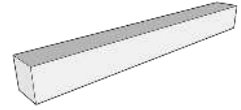
# Lintels

Scan for more info



Lintels provide structural support while maintaining a clean, finished appearance above openings.

## Flat Lintels



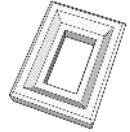
Width	Length	Edge
5"	48"	5"
6"	48"	3 <sup>1/2</sup> "
8"	36"	3 <sup>1/2</sup> "



# Accessories

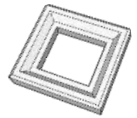
Precast concrete accessories designed to deliver clean details and durable performance.

## Single Switch Fixture



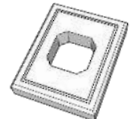
Width	Length	Opening
6"	8"	2 <sup>1</sup> / <sub>2</sub> " / 4 <sup>1</sup> / <sub>4</sub> "

## Double Switch Fixture



Width	Length	Opening
8"	8"	4 <sup>1</sup> / <sub>2</sub> " / 4 <sup>1</sup> / <sub>2</sub> "

## Receptable Cover



Width	Length	Opening
8"	10"	4" / 4"



For unique sizes or profiles, we offer full custom manufacturing; visit our website or get in touch for a custom quote.

# Custom Precast

## **Where precision and craftsmanship combine.**

We offer full custom precast solutions, managing every step of the process from initial design through to mould manufacturing and final production. By keeping all work in-house, we maintain tight control over quality, detail, and turnaround times.





*Explore the full catalogue and request a quote at  
[rockymountainconcrete.ca](http://rockymountainconcrete.ca)*



SCAN TO VISIT OUR WEBSITE

---

**[www.rockymountainconcrete.ca](http://www.rockymountainconcrete.ca)**

**[sales@rockymountainconcrete.ca](mailto:sales@rockymountainconcrete.ca)**

**Lumby, BC – Serving Western Canada**