

# Architectural Wall Caps Catalog



2026 EDITION

---

## Table of Contents

---

01		Peaked Wall Caps	Page 02
----	---	------------------	---------

---

02		Chamfered Wall Caps	Page 06
----	---	---------------------	---------

---

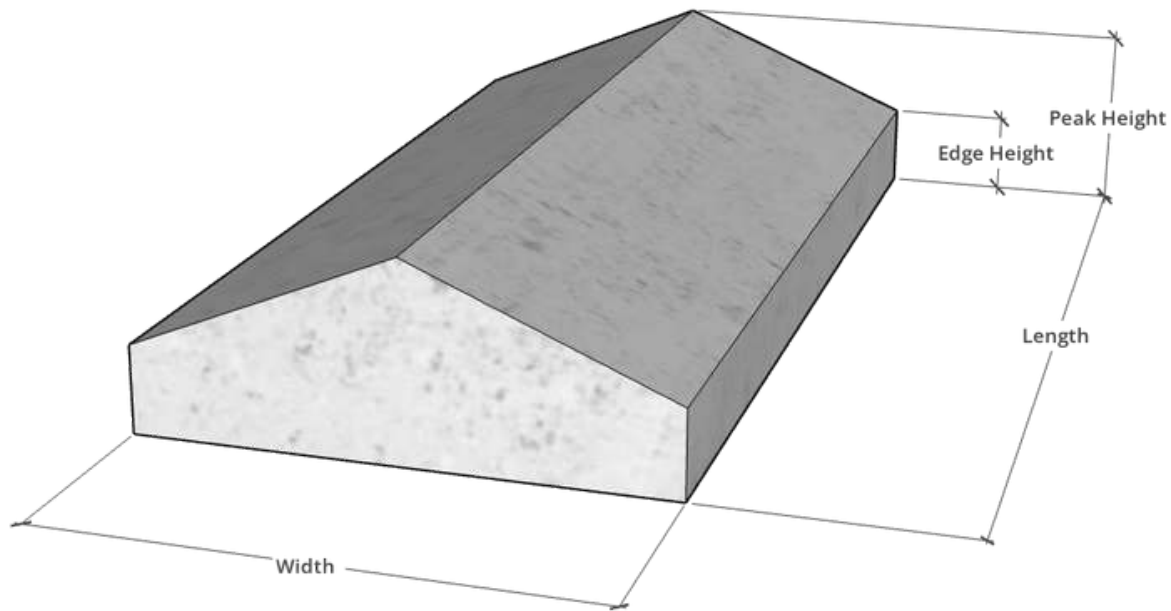
03		Flat Wall Caps	Page 08
----	---	----------------	---------

---

04		Flat Bullnosed Wall Caps	Page 13
----	---	--------------------------	---------

---

# Wall Cap Catalog 2026



## Peaked Wall Caps Available Sizes

Width	Length	Edge Height	Peak Height	Weight	Product Code
6"	24"	1 1/2"	2 1/4"	19 lbs	WP-0624
7"	24"	2"	3"	34 lbs	WP-0724
8"	24"	1 1/2"	2 1/4"	24 lbs	WP-0824
8"	39 1/2"	2 1/2"	5 1/2"	103 lbs	WP-083912
8"	48"	1 1/2"	2 1/4"	59 lbs	WP-0848

# Peaked Wall Caps Available Sizes

Width	Length	Edge Height	Peak Height	Weight	Product Code
9"	24"	2"	3"	44 lbs	WP-0924
9 1/2"	41 1/2"	2 1/2"	3 1/2"	96 lbs	WP-09124112
10"	24"	1 3/4"	2 1/4"	38 lbs	WP-1024
10"	48"	2"	3"	98 lbs	WP-1048(A)
10"	48"	4"	6"	195 lbs	WP-1048(B)
10 1/4"	20"	3"	5"	65 lbs	WP-101420
12"	24"	2"	2 1/2"	54 lbs	WP-1224(A)
12"	24"	2"	3 1/2"	65 lbs	WP-1224(B)
12"	24"	2"	4 1/2"	76 lbs	WP-1224(C)
12"	48"	2"	3 1/2"	129 lbs	WP-1248
12 1/2"	24"	6"	8"	171 lbs	WP-121224
13"	8"	2 1/2"	3"	24 lbs	WP-1308
13"	24"	2"	3"	62 lbs	WP-1324
14"	24"	1 3/4"	2 1/4"	55 lbs	WP-1424(A)
14"	24"	2"	3 1/2"	78 lbs	WP-1424(B)
14"	26"	1 1/2"	2 1/2"	59 lbs	WP-1426
14"	48"	2"	3"	137 lbs	WP-1448
14 1/8"	48"	2 1/2"	3 1/2"	165 lbs	WP-141848
14 3/4"	39 3/8"	2 3/8"	3"	130 lbs	WP-14343938
15"	27"	2"	2 1/2"	74 lbs	WP-1527

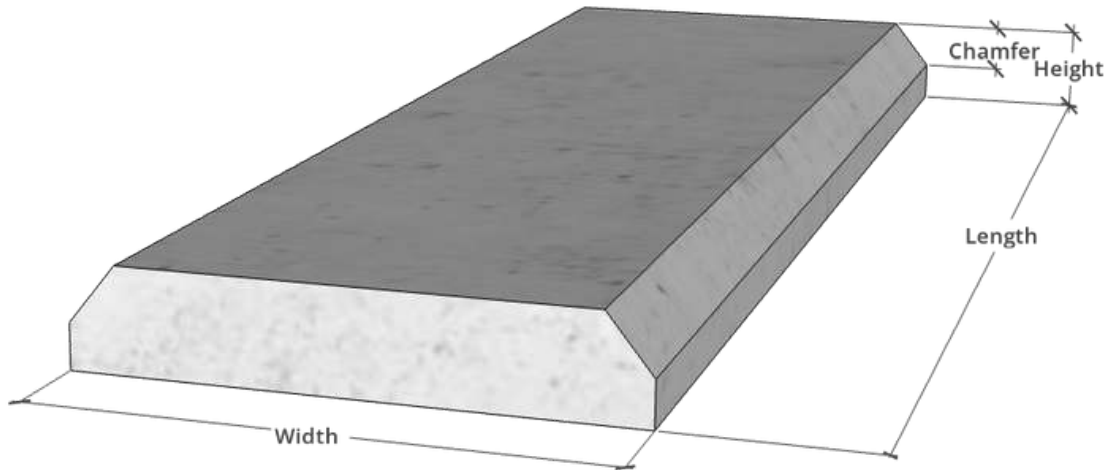
# Peaked Wall Caps Available Sizes

Width	Length	Edge Height	Peak Height	Weight	Product Code
15 1/2"	24"	3"	3 1/2"	100 lbs	WP-151224
15 1/2"	39 1/2"	4"	4 1/2"	211 lbs	WP-15123912
16"	24"	2 1/4"	3 3/4"	94 lbs	WP-1624(A)
16"	24"	3 3/4"	4 1/2"	129 lbs	WP-1624(B)
16"	36"	1 7/8"	3"	112 lbs	WP-1636(A)
17"	30"	1 1/2"	2 1/8"	75 lbs	WP-1730
18"	24"	2"	3 1/2"	97 lbs	WP-1824(A)
18"	24"	2 3/8"	4 3/4"	120 lbs	WP-1824(B)
18"	30"	2"	2 1/2"	99 lbs	WP-1830
18"	36"	2 1/2"	3"	138 lbs	WP-1836
19"	40"	4"	4 1/2"	264 lbs	WP-1940
20"	24"	2 3/8"	4 3/4"	133 lbs	WP-2024(A)
20"	24"	3 3/4"	4 1/2"	160 lbs	WP-2024(B)
20"	24"	2 1/2"	3 1/4"	112 lbs	WP-2024(C)
20"	36"	4"	4 1/2"	248 lbs	WP-2036
22"	32"	2 1/4"	3 1/2"	164 lbs	WP-2232(A)
22 5/8"	24"	4"	5"	198 lbs	WP-225824
23"	18"	3"	4 1/2"	126 lbs	WP-2318
24"	24"	2 1/4"	3"	140 lbs	WP-2424(A)
24"	24"	3 1/4"	4 3/4"	187 lbs	WP-2424(B)

# Peaked Wall Caps Available Sizes

Width	Length	Edge Height	Peak Height	Weight	Product Code
24"	36"	3"	3 1/2"	228 lbs	WP-2436
30 1/2"	24"	2"	3"	149 lbs	WP-301224
38 3/4"	23 5/8"	4"	6"	377 lbs	WP-38342358

# Wall Cap Catalog 2026



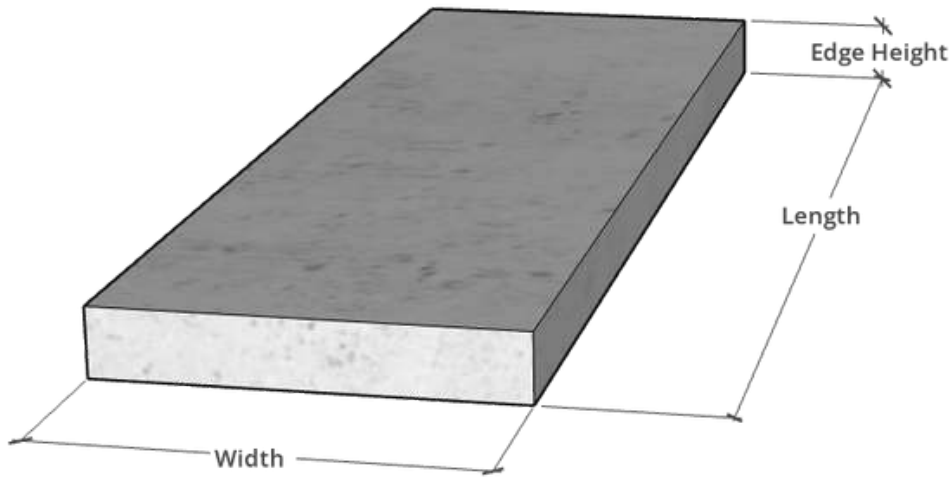
## Chamfered Wall Caps Available Sizes

Width	Length	Max. Thickness	Chamfer	Weight	Product Code
6"	23 1/2"	4 1/2"	3/4"	49 lbs	WC-062312
8"	16"	4"	1/2"	40 lbs	WC-0816
8"	24"	2 1/4"	1"	34 lbs	WC-0824
10"	24"	2 1/4"	1"	40 lbs	WC-1024(A)
10"	48"	2 1/4"	1"	76 lbs	WC-1048
11"	24"	3"	1"	63 lbs	WC-1124
12"	24"	2 1/4"	1"	51 lbs	WC-1224
12"	48"	2 1/4"	1"	102 lbs	WC-1248
13"	48"	2 1/4"	1"	106 lbs	WC-1348

# Chamfered Wall Caps Available Sizes

Width	Length	Max. Thickness	Chamfer	Weight	Product Code
14"	24"	2 1/4"	1"	60 lbs	WC-1424(A)
14"	24"	3"	1"	80 lbs	WC-1424(B)
14"	36"	4"	2"	156 lbs	WC-1436
14"	48"	2 1/4"	1"	119 lbs	WC-1448
14 1/2"	36"	2"	1/2"	85 lbs	WC-141236
15"	24"	4"	1/2"	113 lbs	WC-1524
15"	35"	4"	1"	168 lbs	WC-1535
16"	19 5/8"	4 1/4"	1"	108 lbs	WC-161958
16"	36"	2 1/4"	1"	100 lbs	WC-1636
16 11/16"	23 3/8"	4"	1"	136 lbs	WC-1611162312
17"	24"	2"	1/2"	66 lbs	WC-1724(A)
17"	24"	2 1/4"	1"	73 lbs	WC-1724(B)
17"	48"	5"	2" x 3 1/2"	304 lbs	WC-1748
19"	24"	4"	1/2"	144 lbs	WC-1924
22"	26"	2 1/4"	1"	100 lbs	WC-2226

# Wall Caps Catalog 2026



## Flat Wall Caps Available Sizes

Width	Length	Edge Height	Weight	Product Code
2"	12"	2"	4 lbs	WF-0212
4"	8"	2"	6 lbs	WF-0824
4"	12"	3"	12 lbs	WF-0412
4"	16"	3"	16 lbs	WF-0416
4"	24"	4"	32 lbs	WF-0424
4"	36"	4"	47 lbs	WF-0436
4"	48"	4"	63 lbs	WF-0448
4 1/2"	36"	5"	66 lbs	WF-041236
4 1/2"	48"	3 1/2"	62 lbs	WF-041248

# Flat Wall Caps Available Sizes

Width	Length	Edge Height	Weight	Product Code
4 7/8"	36"	4"	59 lbs	WF-047836
5"	28"	4"	46 lbs	WF-0528
5"	32"	2 1/2"	76 lbs	WF-0532
5 1/4"	30"	3 1/2"	45 lbs	WF-051430
5 1/2"	48"	3 1/2"	75 lbs	WF-051248
6"	12"	2"	12 lbs	WF-0612(A)
6"	12"	2 1/2"	15 lbs	WF-0612(B)
6"	15 1/2"	4 1/2"	34 lbs	WF-061512
6"	48"	3 1/2"	82 lbs	WF-0648
6 1/4"	36"	4"	73 lbs	WF-061436
6 1/2"	48"	2 1/4"	57 lbs	WF-061248
7"	24"	2 1/4"	31 lbs	WF-0724
7 1/2"	11 3/4"	3 1/2"	25 lbs	WF-07121134
7 1/2"	33 1/4"	4 1/2"	91 lbs	WF-07123314
7 1/2"	36"	3 1/2"	77 lbs	WF-071236
8"	16"	4"	42 lbs	WF-0816
8"	20"	2"	25 lbs	WF-0820
8"	24"	5"	78 lbs	WF-0824
8"	36"	3 1/2"	82 lbs	WF-0836
8 1/2"	40"	3 1/2"	97 lbs	WF-081240

# Flat Wall Caps Available Sizes

Width	Length	Edge Height	Weight	Product Code
8 5/8"	39 3/8"	3 1/2"	96 lbs	WF-08583938
9"	18"	2 1/4"	30 lbs	WF-0918
9"	24"	3"	53 lbs	WF-0924
10"	24"	2 1/4"	44 lbs	WF-1024(A)
10"	24"	4"	78 lbs	WF-1024(B)
10"	48"	3"	117 lbs	WF-1048
11"	22"	2"	40 lbs	WF-1122
11"	40"	2 1/4"	77 lbs	WF-1140
11 1/2"	15 5/8"	2 5/8"	39 lbs	WF-11121558
11 1/2"	23 1/2"	3 1/2"	79 lbs	WF-11122312
11 3/4"	32"	2 1/4"	59 lbs	WF-113432
12"	24"	2 1/4"	53 lbs	WF-1224(A)
12"	24"	4"	94 lbs	WF-1224(B)
12"	30"	3 1/2"	103 lbs	WF-1230
12"	36"	2 1/4"	79 lbs	WF-1236(A)
12"	36"	3"	105 lbs	WF-1236(B)
12"	36"	5 1/2"	193 lbs	WF-1236(C)
12"	48"	3 1/2"	164 lbs	WF-1248
12 3/4"	32 7/8"	2"	68 lbs	WF-12343278
13"	36"	5"	190 lbs	WF-1336

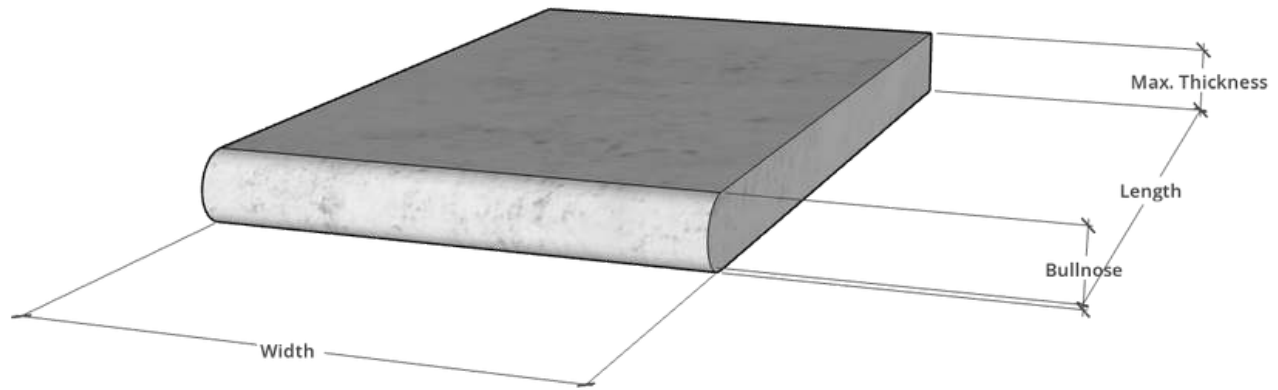
# Flat Wall Caps Available Sizes

Width	Length	Edge Height	Weight	Product Code
14"	24"	2 1/4"	62 lbs	WF-1424(A)
14"	24"	3"	82 lbs	WF-1424(B)
14"	36"	3"	123 lbs	WF-1436
15"	24"	2 1/4"	66 lbs	WF-1524
15"	31"	3"	113 lbs	WF-1531
15 3/4"	43"	2"	110 lbs	WF-153443
16"	24"	2 1/4"	68 lbs	WF-1624(A)
16"	24"	4"	125 lbs	WF-1624(B)
16"	32"	2"	83 lbs	WF-1632
16"	36"	2 1/2"	117 lbs	WF-1636(A)
16"	36"	4"	187 lbs	WF-1636(B)
16"	48"	2 1/2"	156 lbs	WF-1648
16 11/16"	26"	4"	142 lbs	WF-16111626
17"	48"	2 1/2"	166 lbs	WF-1748
18"	20"	2"	59 lbs	WF-1820
18"	24"	2"	70 lbs	WF-1824(A)
18"	24"	4"	140 lbs	WF-1824(B)
18"	36"	4"	210 lbs	WF-1836
19"	36"	4"	222 lbs	WF-1936
20"	36"	4"	234 lbs	WF-2036

# Flat Wall Caps Available Sizes

Width	Length	Edge Height	Weight	Product Code
21"	30"	2"	102 lbs	WF-2130
22"	24"	4"	172 lbs	WF-2224
22"	36"	4"	257 lbs	WF-2236
23"	36"	4"	269 lbs	WF-2336
23 1/4"	39 3/8"	3"	223 lbs	WF-23143938
23 1/4"	41 1/4"	3"	267 lbs	WF-23144714
24"	28"	4"	280 lbs	WF-2428
24"	30 1/2"	4"	238 lbs	WF-243012
24"	31"	2"	121 lbs	WF-2431
24"	48"	2 1/2"	234 lbs	WF-2448
36"	44"	4"	514 lbs	WF-3644

# Wall Cap Catalog 2026



## Flat Bullnosed Wall Cap

Width	Length	Max. Thickness	Bullnose	Weight (lbs)	Product Code
13"	48"	3 1/2"	1/2"	177 lbs	WFB-1348
15"	48"	2 1/2"	1/2"	146 lbs	WFB-1548
16 1/2"	32 1/2"	3"	3"	131 lbs	WFB-16123212
21"	36"	3"	3"	184 lbs	WFB-2136

# Finishes



## **Smooth**

A clean architectural finish available in a wide range of colours, with every piece sanded and patched to eliminate bug holes and deliver a flawless surface.



## **Sandblasted**

A textured finish that reveals the aggregate beneath, available in light, medium, or heavy blasting for the exact look you want.



## **Exposed Aggregate**

A durable, weather-resistant finish that fully showcases the stone and stands up to the harshest outdoor conditions.

# Colours



Adobe



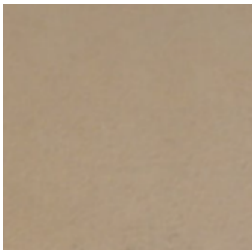
Bayou



Caramel



Charcoal



Cliffside



Cobblestone



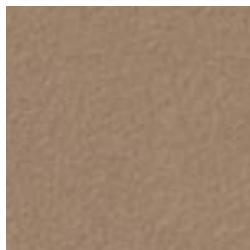
Cocoa



Dark Grey



Dune



Eastern Tan



Flagstone



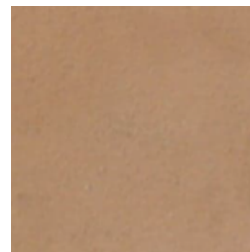
Graphite



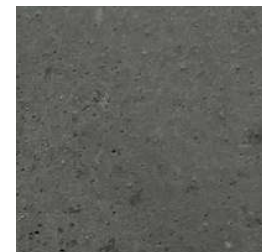
Harvest Gold



Kailua



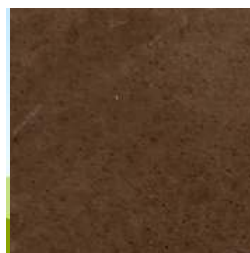
Lakeside



Light Grey



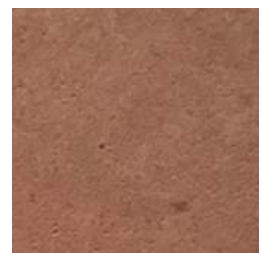
Mesa Buff



Mesquite



Miami Buff



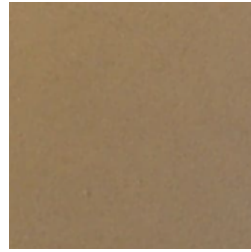
Mocha



Omaha Tan



Outback



Padre Brown



Palomino



Pebble



Pewter



Pueblo



Roadside



Rustic



San Diego Buff



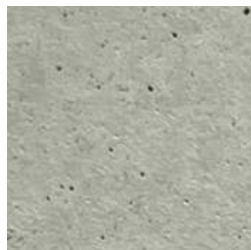
Sandstone



Sequoia Sand



Sierra



Silver Diamond



Silversmoke



Spanish Gold



Taupe



Yosemite Brown



8084 Graphite

